

# Climate change and globalization, drivers of insect invasions

## Auteurs :

**ROQUES Alain**, Directeur de recherche à l'INRA, URZF (Unité de Zoologie Forestière), Orléans.

**AUGER-ROZENBERG Marie-Anne**, Directrice de recherche à l'INRA, URZF (Unité de Zoologie Forestière), Orléans.

05-01-2025



*Global warming and globalization of trade have a decisive impact on the geographical distribution of insects. There is an exponential increase in the establishment of non-indigenous insects worldwide, along with the development of commercial networks. At the same time, global warming is promoting the expansion of many insect species northward and to higher altitudes. These two factors combined explain the multiple insect invasions observed in recent years.*

## 1. An explosion of the establishment of non-native insects in Europe

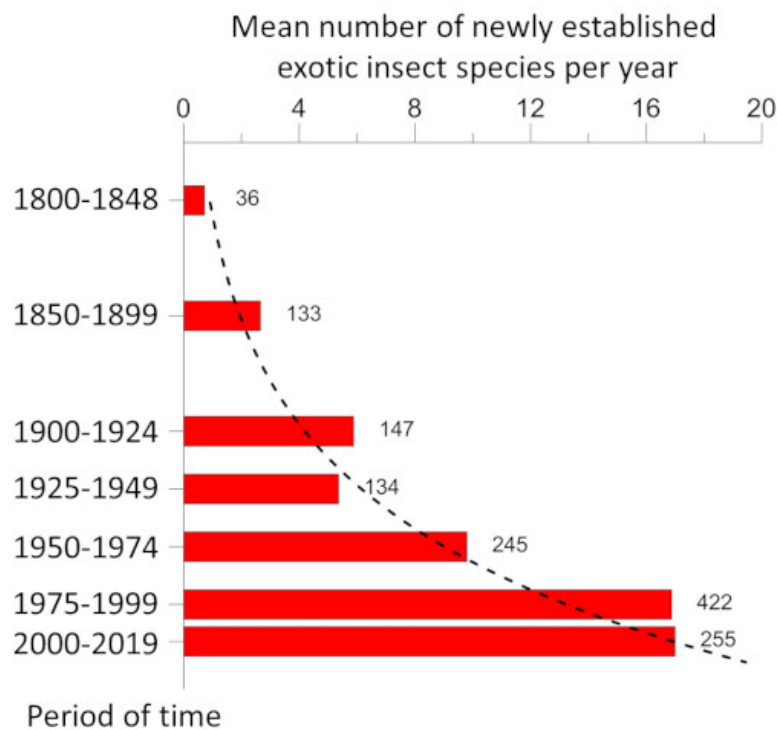


Figure 1. Temporal changes in the establishment of non-native insect species in Europe between 1800 and 2016. The numbers next to the bars correspond to the total number of newly reported non-native species established during the reporting period. [Source: © Roques]

A species is considered as **invasive** when (a) it is introduced outside its continent of origin, (b) it establishes itself (reproduces successfully) there, then (c) spreads beyond the area of introduction, causing (d) nuisances (economic, health, social) and destabilizing local ecosystems.

While the destruction of natural habitats is the primary cause of the current decline in biodiversity, invasions of non-native species are in second place. The rate of establishment of non-native insect species, *i.e.* introduced on a continent other than that of origin, has increased exponentially since the beginning of the 20<sup>th</sup> century. Thus, in Europe, the number of newly established species increased from 9.7 per year during the period 1950-1974 to 17.0 during the period 1990-2016 [1] (Figure 1). By the end of 2016, 1418 non-native insect species had been identified as introduced and established in Europe [2], making it the 2<sup>nd</sup> largest group of non-native species after plants [3] (see [When invasive plants also wander in the fields](#)). Similar values are observed on other continents [4].

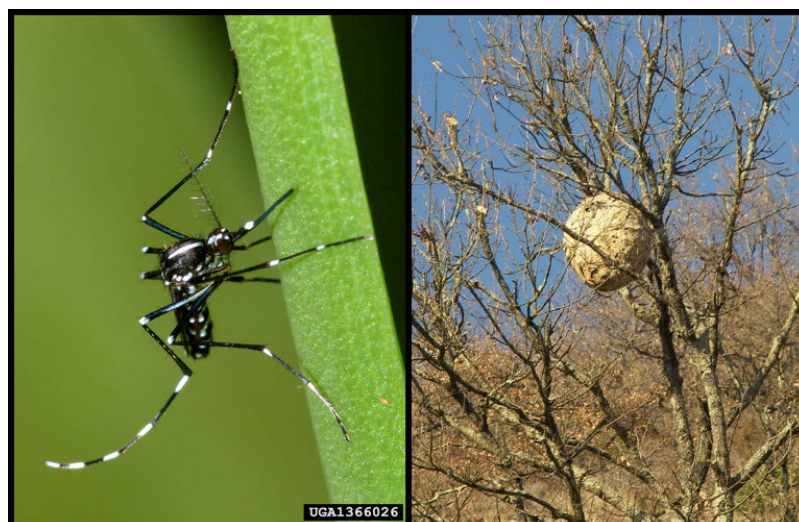


Figure 2. Eggs and larvae of tiger mosquito, *Aedes albopictus* (left), are transported worldwide with used tires. The Asian hornet, *Vespa velutina nigrithorax* (right), was introduced into France as overwintering female within a package containing Chinese pottery (see reference [5]). [Source: Left, © Susan Ellis, Bugwood.org; Right, © J.P. Raimbault, INRA]



This acceleration is due in large part (>90%) to **accidental introductions related to human activities**, and and mainly to the exponential increase in worldwide **trade in ornamental plants**, which results in the transport of plant-associated species [5]. However, other species travel in containers or with goods that have no particular biological significance for them, such as the tiger mosquito or the Asian hornet (Figure 2).

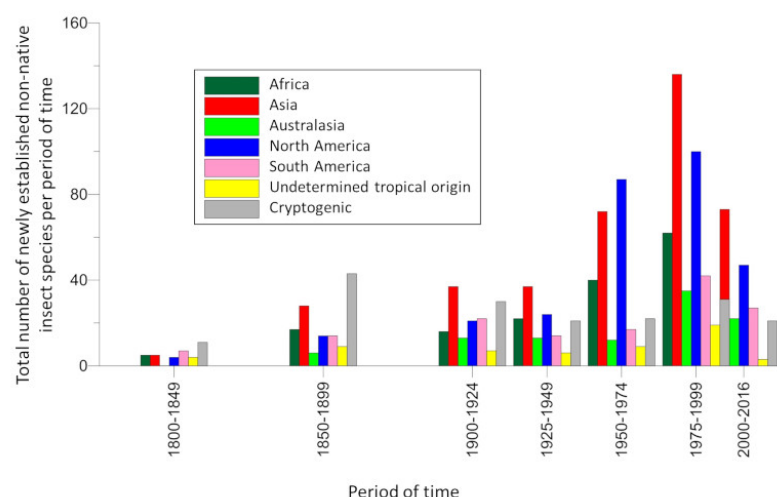


Figure 3. Temporal changes in the origin of non-native insect species establishing in Europe. [Source: Scheme © Roques]

Currently, the arrival of non-native insect species is continuing at a steady pace [4]. In addition, the opening of new markets or outlets and the nature of the imported products significantly expand the source areas of the insects transported. Thus, **Asia** recently became the **dominant source of invasive insect species** (>30%) in Europe at the expense of North America, once the majority (Figure 3).

Nowadays, species qualified as "**emergent**" (because they have never previously been introduced in a continent other than the one of origin [6]) have become predominant. This is the case, for example, of the Asian hornet detected in France in 2004.

## 2. Non-native species are spreading faster and faster across Europe

There is an **acceleration in the rate of expansion of non-native insects**. Non-native species that have become established in Europe over the past two decades have a faster average rate of expansion than those that arrived just after World War II [1]. Many of them colonized almost the entire continent in less than fifteen years, while most species established in the first half of the 20<sup>th</sup> century took several decades to achieve this. Several examples indicate that this expansion rate is independent of the origin of the introduced insect (Figures 4 and 5).



Figure 4. From left to right: the western conifer seed bug, *Leptoglossus occidentalis*; the box tree moth, *Cydalima perspectalis*; a fruit fly, the spotted wing drosophila, *Drosophila suzukii*, and a South American moth, the tomato leafminer, *Tuta absoluta*. [Source: bug and box tree moth © Roques; fruit fly © Hannah Burrack, North Carolina State University, Bugwood.org; tomato leafminer, © Marja van der Straten, NVWA Plant Protection Service, Bugwood.org]

Thus, the western conifer seed bug, *Leptoglossus occidentalis* (Figure 4), a native from North America, was first observed in 1999 in north-eastern Italy [7]. In 2018, it is present from Portugal to Russia and from North Africa to Scandinavia, as well as in the Middle East, Asia and South America.

Insects of Asian origin have spread even more rapidly, colonizing most of Europe in less than 10 years:

The box tree moth, *Cydalima perspectalis* (Figure 4), was first detected in 2006 in Germany [8];

The spotted wing *Drosophila*, *Drosophila suzukii* (Figure 4), detected in 2008 in Italy [9]. But it also true for a moth of South American origin, the tomato leafminer, *Tuta absoluta* (Figure 4), first observed in 2006 in Spain [10].

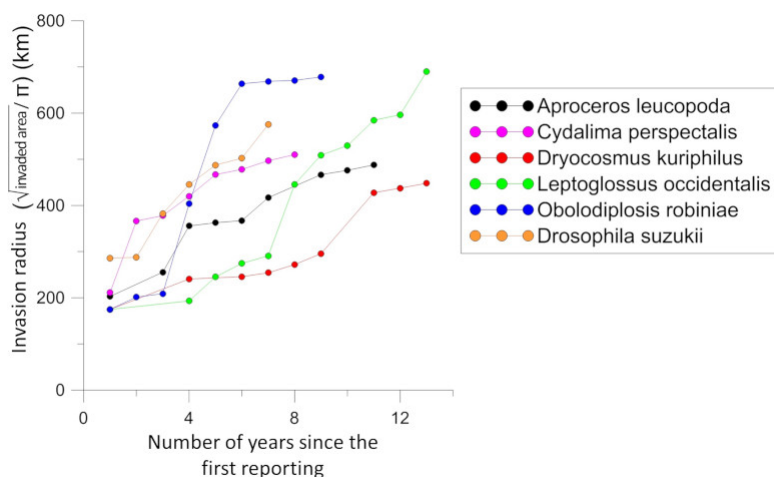


Figure 5. Observed rate of spread in 6 non-native insect species established in Europe since the late 1990s. [Source: Scheme based on reference [1], modified © Roques and Auger-Rozenberg]

An analysis of 1171 non-native insects that arrived since 250 years ago shows that the initial rate of expansion of species introduced after 1990 is:

4 times higher than that of species established just after the Second World War (1950-1969),

3 times higher than that of the species detected during the period 1970-1989 [1].

This recent acceleration in the expansion of non-native insects (Figure 5) could be linked to the **political and economic changes in Europe** (fall of the Berlin Wall and enlargement of the European Union), with in particular the abolition of intra-Community customs controls [1].

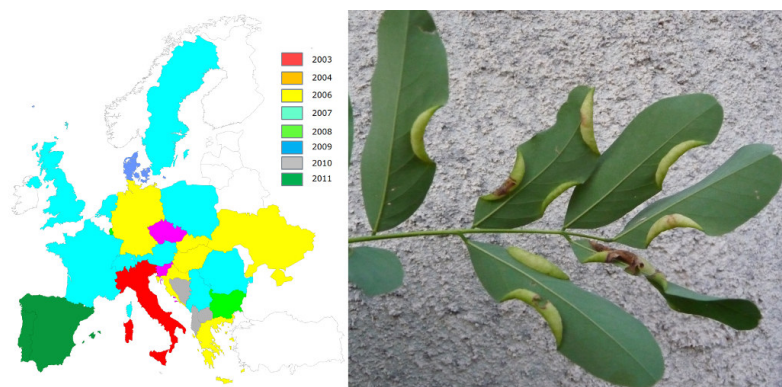


Figure 6. Spread of the black locust gall midge (*Obolodiplosis robiniae*), a native of North America, since its first observation in Italy in 2003. Right: North American black locust, *Robinia pseudoacacia*, leaves affected by midge galls, each gall containing a larva. [Source: © Roques]

Many insects can disperse naturally, sometimes over long distances, but the year-to-year progression of invaded areas makes this explanation implausible for most of the studied species. For example:

Box tree moth (*Cydalima perspectalis*) and western conifer seed bug (*Leptoglossus occidentalis*) increased over a year by more than 150 km radius (Figures 4 and 5) while adult flight capacity was estimated at a few tens of kilometres [8].

A very small midge (adult size: 5 mm) of North American origin, the black locust gall midge (*Obolodiplosis robiniae*) has progressed in 2 years by more than 450 km (Figures 5 and 6) [11].



Figure 7. Adult and larvae of the Asian long-horned beetle, *Anoplophora glabripennis*, introduced from China, and now present in particular in Gien, North-Central France, and around Bastia, Corsica. [Source: Left, © M. Javal, INRA; Right, © Roques]

For several species, comparisons between the genetic diversity of populations in invaded areas and that of the original areas have shown the existence of multiple introductions from different native areas of the insect. "Bridgehead" phenomena, where introduced insects come from an already invaded area, may also be involved [7]. These multiple introductions may explain the fast spread of some species such as the box tree moth [8], the conifer seed bug [7], or the Asian long-horned beetle, *Anoplophora glabripennis* [11] (Figure 7). However, genetic analyses also suggest a **key role played by human activities, and particularly plant trade**, in the rapid intra-European movements of these non-native insects. The case of the box tree moth, whose eggs and caterpillars are transported throughout Europe via the ornamental boxwood trade by nurseries and garden centres, is emblematic [8] (Figure 4).

### 3. Global warming is changing the range of insects

With an increase in global average temperature of 0.61°C since the beginning of the 20<sup>th</sup> century and a future warming estimated at between 2.6 and 4.8°C for 2100 according to the models of the *Intergovernmental Panel on Climate Change* (IPCC [12]), we can expect a **significant impact of climate change on most insect species**. This foreseeable impact is linked to the very biology of insects.

Insects are "cold" blooded animals that do not produce heat. They are called "ectotherms" unlike "endothermic" mammals, which are able to produce heat through their metabolic activity and keep their body temperature more or less constant. The body temperature of insects and the associated physiological processes will therefore depend directly on changes in ambient temperature. These variations will, among other things, govern their periods and rhythms of activity, the duration of their different stages of larval development and the number of annual generations, their flight possibilities, etc.... For a large number of species, **specific temperature thresholds** delimit barriers limiting their geographical distribution:

Thus, the -16°C isotherm limits the chances of winter survival of the North American southern pine beetle, a major pest of conifers, *Dendroctonus frontalis* [13] (Figure 8), such as those of larvae of pine processionary moth (see Focus [The pine processionary, a model...](#)).

But the +40° isotherm also limits the summer survival of the eggs of this same processionary moth [14].

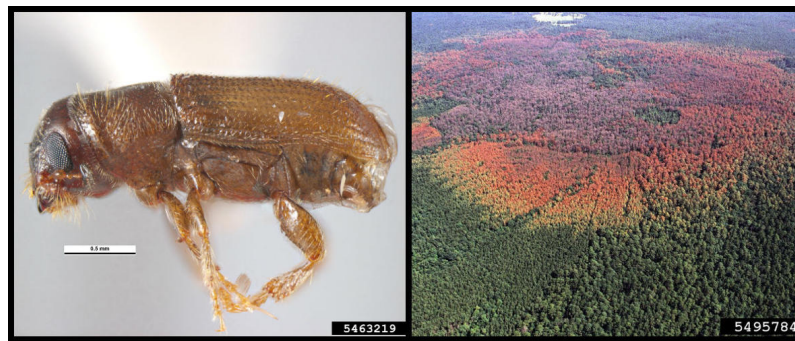


Figure 8. The North American southern pine beetle, *Dendroctonus frontalis*, and its damage to forests in North America. [Source: A, © Pest and Diseases Image Library, Bugwood.org; B, © Ronald F. Billings, Texas A&M Forest Service, Bugwood.org]

Climate change, by removing or moving these barriers in space, allows expansion into areas previously unsuitable for the establishment of the species under consideration. **Many species respond quickly to rising temperatures by moving their range northward or to higher elevations:**

In Europe, 63% of non-migratory butterflies have seen their range increasing northward over distances of 35 to 240 km over the past century, along with the average isothermal movement of 120 km to the pole due to a warming of about 0.8°C [15].

In western North America, the 92-km average northward expansion of the *Euphydryas editha* butterfly has also been linked to a 105-km northern displacement of isotherms during the same period [16].

Similar phenomena of expansion northward and at higher altitudes of beetles, dragonflies and grasshoppers have been observed over the past 30 years [17].

However, a simple comparison of the past and current distribution of species with the movement of isotherms during the same period is not sufficient to prove the implication of climate change. To demonstrate that this cannot result from a simple correlation, it is essential to identify a causal link between a change in the range and a change in the climatic factor considered.



Figure 9. In these two species of birch-associated butterflies in northern European boreal regions (*Epirrita autumnata* and *Operophtera brumata*), egg mortality decreases with increasing winter temperatures. [Source: Left © Emmanuel Fréri, insecte.org (Licence CC BY NC); right © Milan Zubrik, Forest Research Institute - Slovakia, Bugwood.org]

Under temperate latitudes, **low temperatures are generally a key factor limiting the range of insect species.** Minimum temperature thresholds exist both for the insect's winter survival and for its transition from one stage of development to another (egg, larva, nymph and adult). The **even slight increase in winter temperatures thus allows survival in geographical areas previously inaccessible due to harsh climates:**

Until the early 2000s, winter survival of the southern pine beetle (*Dendroctonus frontalis*- Figure 8) was only possible in the southeastern United States, due to its estimated lethal winter temperature of -16°C. This area was then the northern limit of the insect's range. Latitudinal movement northward from the -16°C isotherm has allowed the insect to colonize areas at much more northerly latitudes in the northeastern United States [18].

Winter survival of eggs of several species of geometric butterflies is also favoured in areas of northern Scandinavia previously unsuitable for their establishment (Figure 9).



Cause-effect relationships have been experimentally established regarding the role of winter warming in the expansion of the pine processionary (see Focus [The pine processionary, a model...](#)) [19].

## 4. Annual increase in average temperature, a relevant variable?

Global warming is most often assessed from the increase in the average annual air temperature at sea level. However, insect populations are not confronted with an average temperature, but with a daily variation in the weather conditions under which they develop. Taking into account only the increase in annual temperature may mask the differential effects of seasonal warming.

Thus, **an increase in temperature in winter, spring, summer, or fall will not have the same biological impact as a result of allowing populations to expand or not.** While the increase in winter temperatures allows some species to survive in previously unfavourable areas, an increase in spring and/or summer temperatures will tend to accelerate the development of immature stages, allowing an increase in the number of annual generations in some species, and encourage movement.

This is particularly the case for migratory butterfly species such as the noctuid *Autographa gamma*, whose incursions into Britain from overwintering sites in North Africa are facilitated by rising temperatures [20].

In the Italian Alps, the 2003 summer heat wave also allowed the pine processionary moth to extend its distribution because nights when the temperature exceeded the threshold required for females to fly (14°C) were then 5 times more frequent than normal, allowing a greater proportion of moth to disperse over long distances [21].



Figure 10. Adult of southern green stink bug, *Nezara viridula*. [Source: Photo © Johnny N. Dell, Bugwood.org]

However, the same annual temperature increase may mask **contradictory effects of seasonal warming**, as in the *Nezara viridula* bug in Japan (Figure 10). The northward expansion of this bug results from the balance between the positive effect of global warming, which improves adult survival in winter and accelerates the development of immature bugs in fall, and its negative effect on pupal development in summer. Similarly, while the strong winter warming observed in 2002-2003 had allowed processionary larvae to survive significantly in their expansion zone in the Paris region, the heat wave of summer 2003 liquidated a large part of this expanding population [13]. The additional effects of extreme events such as summer heat waves, whose increased frequency is expected in the future, are also to be taken into account but are still relatively unknown [17].

## 5. Expansion to the North and contraction to the South?

Few data exist on the possible contraction of the distribution area to its southern limit with increasing temperatures. In most

European butterflies, the **southern limit of northward moving species appears to have remained stable**, and only a few, such as the lycaenid butterfly *Heodes tytirus*, show a decline in populations south of the area [15]. For two species of moths (*Lymantria dispar* and *L. monacha*), simulations based on the foreseeable increase in temperatures in the future suggest a **retraction of the southern limit** from 100 to 900 km due to the negative effects of excessively high temperatures on larval hatching from eggs in winter **diapause** [22], a phenomenon that corresponds to a temporary pause in development in response to the occurrence of adverse climatic conditions.

More generally, for insects developing during spring and summer, changes in range could be roughly determined by a combination of development rate (fast or slow) and winter diapause process [23]:

rapidly developing species, without diapause, will tend to increase the number of generations per year and increase their range (in the case of aphid species);

fast-growing species, but with temperature-affected diapause, will tend to have their area shrink (case of European peacock butterfly, *Inachis io*, or small emperor moth, *Saturnia pavonia*);

slow-growing species with temperature-affected diapause will tend to decline and have their area reduced (case of oak egg, *Lasiocampa quercus*).

## 6. Globalization and global warming act in a combined way

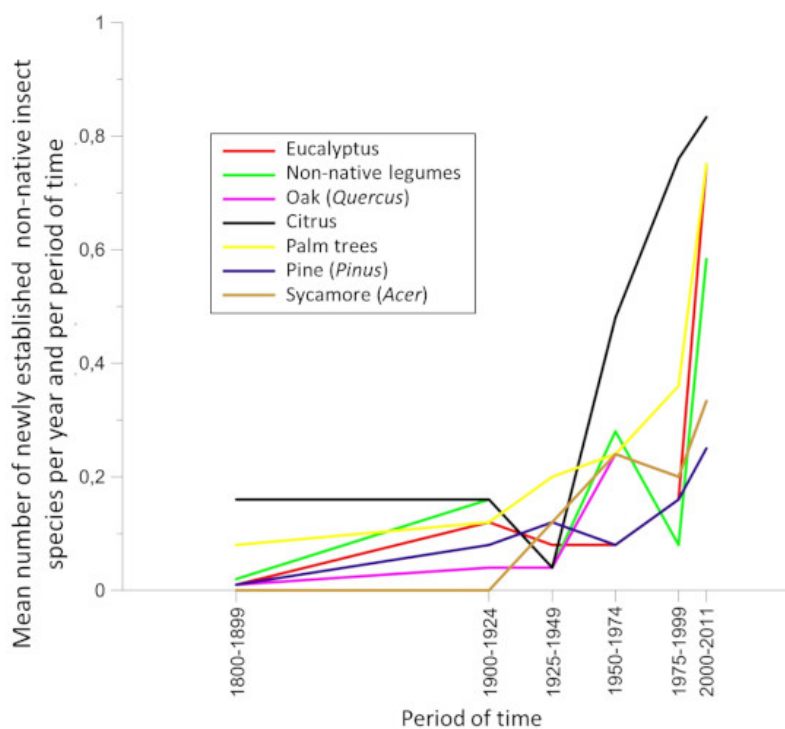


Figure 11. Comparison of the temporal processes of colonization by non-native insects of non-native trees planted in Europe (Eucalyptus, exotic legumes - Acacia and Albizzia, and palm trees) and native trees (oaks, maples and pines). [Source: Scheme © Roques]

The globalization of trade encourages the accidental arrival on the European continent of insect species from subtropical or tropical areas. Until recently, however, their establishment was constrained by winter conditions unfavourable to their survival over most of the continent, and by the limited duration of periods with temperatures favourable to their development. **Since the 1990s, however, there has been a significantly larger establishment than in the past of non-native insects on plants of tropical or subtropical origin planted in Europe** such as eucalyptus, palm trees, and other acacias [24] (Figure 11). Thus, more than 400 insect species from subtropical or tropical climate regions had already established in Europe by the end of the 2000s [25]. But these species generally remained confined to their point of introduction, most often in the Mediterranean area. The situation has changed during the recent years for a number of these species as evidenced by insects associated with palm trees (Figure 12).





Figure 12. Left: Red palm weevil (*Rhynchophorus ferrugineus*) and *Paysandisia archon* butterfly (right). [Source: Weevil © O. Denux, INRA; butterfly © L. Ollivier, CIRAD]

While they had remained confined to their respective areas of introduction in southern Spain and the Canary Islands until the mid-2000s, the red palm weevil (*Rhynchophorus ferrugineus*) and the *Paysandisia archon* butterfly (Figure 12) colonized most of the Mediterranean region between 2004 and 2007, and the butterfly to the south of England. This rapid spread has been attributed to a combined effect of global warming, allowing better development of these tropical species, and the trade in ornamental palms. The arrival of the weevil in Greece is thus concomitant with imports of Spanish palm trees for the decoration of the Olympic Games in Athens (2004) [26]. The **same applies to native insects** accidentally **transported** by humans beyond their natural range. The new climatic conditions in these areas of introduction allow them to settle there, particularly for Mediterranean insects transported northwards such as the European mantis (*Mantis religiosa*) [27] or the pine processionary moth (*Thaumetopoea pityocampa*, see Focus [The pine processionary, a model...](#)).

## 7. Global warming alone is responsible for the expansion of insects?

Most studies to date have focused on the effects of rising temperatures. But climate change incorporates multiple other factors, such as humidity, rainfall intensity and frequency, radiation, or greenhouse gas levels, which can act directly or in synergy with rising temperatures. For example, the establishment in our regions of the asian tiger mosquito, *Aedes albopictus*, is conditioned by temperature but also by the length of the day compared to the night (photoperiod), humidity and rainfall [28]. But the other studies, most often conducted under laboratory conditions, so far give only often contradictory indications as to the possible responses of insects to fluctuations in these variables, for example on the effect of CO<sub>2</sub> [29]. The development of large-scale field experiments appears essential.

Research on the relationship between climate change and insect expansion has often focused on the specific responses of insects with high economic or health impacts, rarely taking into account their associated organisms. However, **climate change simultaneously affects the entire ecosystem, including host (plants), competing insects and natural enemies**. The responses of each of these components may differ for the same temperature increase and the interactions may be significantly altered in one direction or another. For example, studies suggest that the effectiveness of some predators, such as ladybeetles, may increase in a warmer environment, and the expansion of aphid-prey may be reduced [30]. On the other hand, the pine processionary progresses faster northwards than its natural enemies [31]. The development of integrated studies, considering all ecosystem components simultaneously, is a necessity for future research.

## 8. Messages to remember

The intensification and diversification of world trade, particularly in ornamental plants, is leading to an increase in the establishment of non-native insects in Europe.

After their establishment, these insects tend to spread across Europe faster than in the last century.

Warming, particularly in winter temperatures, removes climatic barriers limiting the range of a number of native or non-native species, and allows them to expand into areas previously unfavourable to their survival during the winter.

Warming facilitates the establishment and spread of non-native species of subtropical and tropical origin.

## Notes and references

**Cover image.** Massive attack by the pine processionary at its altitudinal expansion front in the Italian Alps. Oulx, Piedmont; winter 2015-2016. [Source: Photo Roques © INRA]

[1] Roques A., Auger-Rozenberg M.-A., Blackburn T.M., Garnas J.R., Pyšek P. et al. (2016) Temporal and interspecific variation in rates of spread for insect species invading Europe during the last 200 years. *Biological Invasions* **18**, 907-920.

[2] Source: DAISIE European project database ("*Delivering Alien Invasive Species Inventories in Europe*"; <http://www.europe-aliens.org>) recently updated in the EASIN database ("*European Alien Species Information Network*"; <http://easin.jrc.ec.europa>),

[3] DAISIE (2009) *Handbook of alien species in Europe*. Berlin: Springer Science + Business Media B.V.

[4] Seebens H., Blackburn T.M., Dyer E.E., Genovesi P., Hulme P.E. et al. (2017) No saturation in the accumulation of alien species worldwide. *Nature Communications*. DOI: 10.1038/ncomms14435.

[5] Roques A., Rasplus J.Y., Rabistch W., Lopez-Vaamonde C., Kenis M et al. (2010). Alien Terrestrial Arthropods of Europe. *BioRisk* **4** (1 and 2), 1-1024.

[6] Seebens A., Blackburn T.M., Dyer E.E., Genovesi P., Hulme P.E. et al. (2018). The global rise in emerging alien species results from increased accessibility of new source pools. *Proceedings of the National Academy of Sciences of the USA*. doi/10.1073/pnas.1719429115.

[7] Lesieur V., Lombaert E., Guillemaud T., Courtial B., Strong W. et al. (2018) The rapid spread of *Leptoglossus occidentalis* in Europe: a bridgehead Invasion. *Journal of Pest Science*. <https://doi.org/10.1007/s10340-018-0993-x>

[8] Bras A. Invasion fulgurante de la pyrale du buis en Europe: Caractérisation de la diversité génétique de *Cydalima perspectalis* (Walker, 1859) et approche phylogéographique [https://belinra.inra.fr/doc\\_num.php?explnum\\_id=1021](https://belinra.inra.fr/doc_num.php?explnum_id=1021) (in french)

[9] Cini A., Ioriatti C., Anfora G. (2012). A review of the invasion of *Drosophila suzukii* in Europe and a draft research agenda for integrated pest management. *Bulletin of Insectology* **65**(1) 149-160.

[10] Desneux N., Luna M.G., Guillemaud T. and Urbaneja A. (2011) The invasive South American tomato pinworm, *Tuta absoluta*, continues to spread in Afro-Eurasia and beyond the new threat to tomato world production. *Journal of Pest Science* **84**, 403 - 408.

[11] Javal M., Roques A., Haran J., Herard F., Keena M., Roux G. (2017) Complex invasion history of the Asian long-horned beetle: fifteen years after first detection in Europe. *Journal of Pest Science* DOI 10.1007/s10340-017-0917-1.

[12] <http://ar5-syr.ipcc.ch/>

[13] Ungerer M.J., Ayres M.P., Lombardero M.J. (1999). Climate and the northern distribution limits of *Dendroctonus frontalis* Zimmermann (Coleoptera: Scolytidae). *Journal of Biogeography* **26**, 1133-45.

[14] Faucet C., Rousselet J., Pineau P.; Miard F., Roques A. (2013). Are heat waves susceptible to mitigate the expansion of a species progressing with global warming? *Ecology and Evolution* **3**(9), 2947-57.

[15] Parmesan C, Ryrholm N, Stefanescu C et al (1999). Poleward shifts in geographical ranges of butterfly species associated with regional warming. *Nature* **399**, 579-83.

[16] Parmesan C (1996). Climate change and species' range. *Nature* **382**, 765-766.

[17] Hickling R., Roy D.B., Hill J.K., Fox R., Thomas C.D. (2006). The distributions of a wide range of taxonomic groups are expanding polewards. *Global Change Biology* **12**, 450- 455.

[18] Trân J.K., Ylioja T., Billings R.F., Régnière J., Ayres M.P. (2007). Impact of minimum winter temperatures on the population dynamics of *Dendroctonus frontalis*. *Ecological Applications* **17**, 882-899.

[19] Jepsen J.U., Hagen S.B., Ims R.A., Yoccoz N.G. (2008). Climate change and outbreaks of the geometrids *Operophtera*

*brumata* and *Epirrita autumnata* in subarctic birch forest: evidence of a recent outbreak range expansion. *Journal of Animal Ecology* **77**, 257-264.

[20] Chapman J.W., Reynolds D.R., Smith A.D., Riley J.R., Pedgley D.E., Woivod I.P. (2008). Wind selection and drift compensation optimize migratory pathways in a high-flying moth. *Current Biology* **18**, 514-518.

[21] Battisti A., Stastny M., Buffo E., Larsson S. (2006). A rapid altitudinal range expansion in the pine processionary moth produced by the 2003 climatic anomaly. *Global Change Biology* **12**, 66- 671.

[22] Vanhanen H., Veteli T.O., Pailvinen S., Kellomaki S., Niemala P. (2007). Climate change and range shifts in two insect defoliators: Gypsy moth and nun moth - A model study. *Silva Fennica* **41**, 621-38 ;

[23] Bale J.S., Masters G.J., Hodkinson I.D. et al. (2002). Herbivory in global climate change research: Direct effects of rising temperature on insect herbivores. *Global Change Biology* **8**, 1-16.

[24] Eschen R., Roques A., Santini, A. (2015). Taxonomic dissimilarity in patterns of interception and establishment of alien arthropods, nematodes and pathogens affecting woody plants in Europe. *Diversity and Distributions* **21** (1), 36-45.

[25] Walther G R., Roques A., Hulme P.E., Sykes M.T., Pyšek P., et al. (2009). Alien species in a warmer world: risks and opportunities. *Trends in Ecology and Evolution* **24**, 686-692.

[26] Roques A. (2010). Alien forest insects in a warmer world and a globalized economy: Impacts of changes in trade, tourism and climate on forest biosecurity. *New Zealand Journal of Forestry* **40**, 77-94.

[27] Ott J., ed (2008). Monitoring climate change with dragonflies. Series Faunistica 81. Pensoft, Sofia. Cannon R.J.C. (1998). The implications of predicted climate change in the UK, with emphasis on non-indigenous species. *Global Change Biology* **4**, 785- 796.

[28] Eritja R., Escosa R., Lucientes J. et al. (2005). Worldwide invasion of vector mosquitoes: Present European distribution and challenges for Spain. *Biological Invasions* **7**, 87-97.

[29] Newman J.A. (2005). Climate change and the fate of cereal aphids in Southern Britain. *Global Change Biology* **11**, 940-944.

[30] R.J.C. Cannon (1998). The implications of predicted climate change in the UK, with emphasis on non-indigenous species. *Global Change Biology* **4**, 785-796.

[31] Auger-Rozenberg M.A., Barbaro L., Battisti A., Blache S., Charbonnier Y., et al. (2015). Ecological responses of parasitoids, predators and associated insect communities to the climate-driven expansion of pine processionary moth. pp. 311-358 In Roques A. (Ed.) *Processionary Moths and Climate Change: An Update*. Springer/ Quae

---

L'Encyclopédie de l'environnement est publiée par l'Université Grenoble Alpes - [www.univ-grenoble-alpes.fr](http://www.univ-grenoble-alpes.fr)

Pour citer cet article: **Auteurs** : ROQUES Alain - AUGER-ROZENBERG Marie-Anne (2025), Climate change and globalization, drivers of insect invasions, Encyclopédie de l'Environnement, [en ligne ISSN 2555-0950] url : <http://www.encyclopedie-environnement.org/?p=6733>

Les articles de l'Encyclopédie de l'environnement sont mis à disposition selon les termes de la licence Creative Commons Attribution - Pas d'Utilisation Commerciale - Pas de Modification 4.0 International.

---