

The colour of leaves

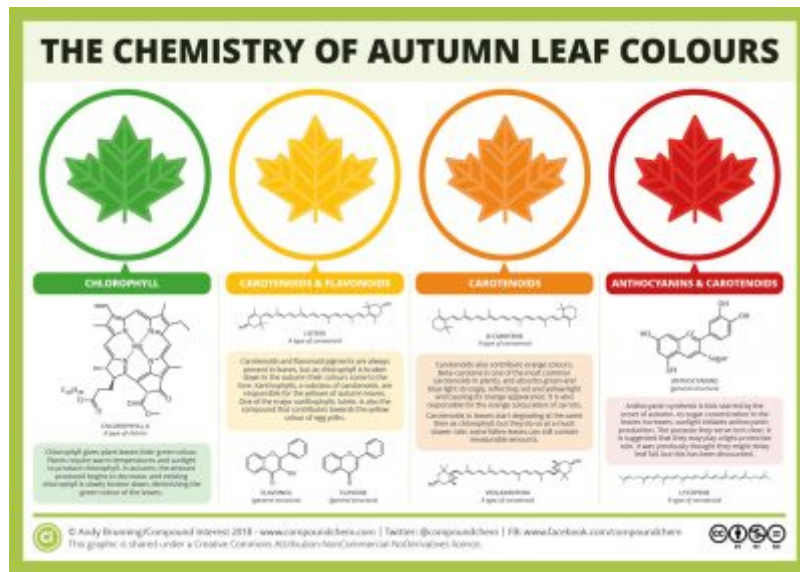


Figure 1. The pigments in autumn leaves. [Source © Andy Brunning/Compound Interest 2018/CC-NC-ND 4.0]

Plants produce an incredible diversity of pigments linked to many physiological and/or biological functions: photosynthesis, reproduction (to attract insects when pollinating flowers, for example). There are several types of pigments in leaves, mostly chlorophylls, carotenoids and anthocyanins.

Chlorophyll is responsible for the green colour of leaves (see [Shedding light on Photosynthesis](#)), but in autumn, some forests or crops lose their green colour and turned spectacularly coloured. In these leaves, chlorophyll disappears while other pigments - such as carotenoids, naturally present all year round in the leaf - have not yet disappeared. This process begins as the length of the day decreases and temperatures drop. When the chlorophyll level decreases, the synthesis of anthocyanins - which are responsible for the red colour of the leaves - increases. These are the initial stages of leaf senescence that will lead to leaf fall (Figure 1). [11](#)

1. Leaf pigment analysis

- a porphyrin nucleus - containing nitrogen molecules - similar to that of the haemoglobin in our blood, but containing magnesium rather than iron; the presence of magnesium is essential for the functioning ;

- a hydrophobic tail with 20 carbon atoms, phytol-, derived from isoprene and which allows the fixation to proteins of the photosystems.

Various chlorophylls (referred to as *a*, *b*, *c*, *d*, *e* and *f*) are distinguished from each other by distinct lateral groups (Figure 3). Chlorophyll *a* is present in all aquatic and terrestrial plants. Conversely, some chlorophylls are specific to certain types: chlorophylls *c1* and *c2* exist in brown algae, chlorophyll *d* is present in cyanobacteria.

The absorption of light by chlorophyll is due to the presence of numerous conjugated double bonds in its structure. Optimal functioning of the photosynthetic apparatus involves the permanent renewal of the protein-pigment complexes, as they degrade rapidly during their activity.

3. Carotenoids

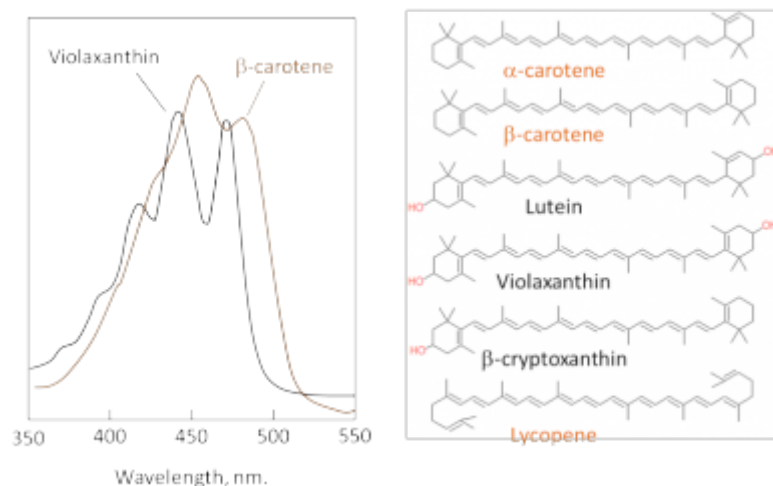


Figure 4. Absorption spectrum of β -carotene and a xanthophyll: violaxanthin (pigments dissolved in alcohol). Right: structure of some carotenoids (α - and β -carotene and lycopene; xanthophylls: lutein, zeaxanthin and β -cryptoxanthin). [Sources: Structural diagram © David E. Volk (CC BY-SA 3.0) via Wikimedia Commons]

Carotenoids are yellow to orange or red pigments derived from isoprene* (see Figure 4). They are soluble in organic solvents. Synthesized in the various plastid types, their diversity is remarkable: more than a thousand distinct molecules have been described in living organisms (plants, animals, etc.). In leaves, one can find:

- **carotenes**, mainly β -carotene, which do not contain oxygen (Figure 4). The β -carotene does not actively contribute to photosynthesis but absorbs the excess energy from the chlorophyll in order to avoid the formation of reactive oxygen species (superoxide $O_2^{\bullet -}$, singlet oxygen $\bullet O-O\bullet$, hydroxyl $HO\bullet$) which would destroy the leaf.
- **Xanthophylls** - which contain oxygen - are a subclass of carotenoids essential for photosynthesis and photosystem protection. Main xanthophylls in leaves are lutein, zeaxanthin, violaxanthin, etc. Pigments absorb mainly in the blue wavelengths, hence their yellow colour (Figure 4). Xanthophylls are precursors of plant hormones (abscisic acid in particular).

4. Anthocyanins

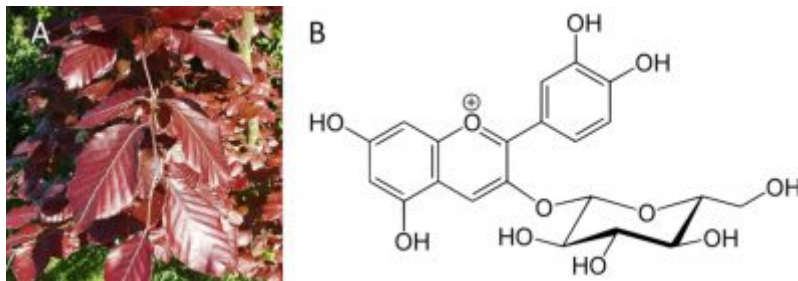


Figure 5. Purple beech leaves (A, Photo © David Hawgood / Leaves of copper beech / CC BY-SA 2.0) contain anthocyanins which give them their special colour; cyanidine 3-O-glucoside is one of the majority of anthocyanins in these leaves (B, Schematic Yikrazuul [Public domain] via Wikimedia commons). Source: Left, David Hawgood / Leaves of copper beech; Right, Yikrazuul / Public domain]

Anthocyanins (from the Greek *anthos* "flower" and *kuanos* "dark blue") are water-soluble pigments - they contain sugars - produced by the flavonoid pathway in the cytoplasm of the plant cell and then stored in vacuoles. [3]

Anthocyanins are responsible for the pinkish-red colour of most flower petals, fruits and almost all red leaves in the fall. Anthocyanins absorb visible light in the blue-green wavelengths. That's why they appear to us in red. However, anthocyanins are sensitive to the pH of the medium in which they are stored and their colour varies from red (in an acidic medium) to blue (as soon as the pH reaches neutrality).

Anthocyanins play a protective role by protecting the leaves from UV light.

Notes and References

Cover image. Maple leaves in the light. [Photo © Jacques Joyard]

[1] Autumn leaf pigments:

<https://i2.wp.com/www.compoundchem.com/wp-content/uploads/2014/09/Chemistry-of-Autumn-Leaves-2018.png>

[2] Sjursnes B.J., Kvittinegn L. & Schmid R. (2015) Normal and Reversed-Phase Thin Layer Chromatography of Green Leaf Extracts. *J. Chem. Educ.* , 92, 1, 193-196.

[3] Selosse M.A. (2019) Les goûts et les couleurs du monde. Une histoire naturelle des tannins, de l'écologie à la santé. Actes Sud, ISBN 978-2-330-12677-3 (in french)

L'Encyclopédie de l'environnement est publiée par l'Université Grenoble Alpes.

Les articles de l'Encyclopédie de l'environnement sont mis à disposition selon les termes de la licence Creative Commons Attribution - Pas d'Utilisation Commerciale - Pas de Modification 4.0 International.
